



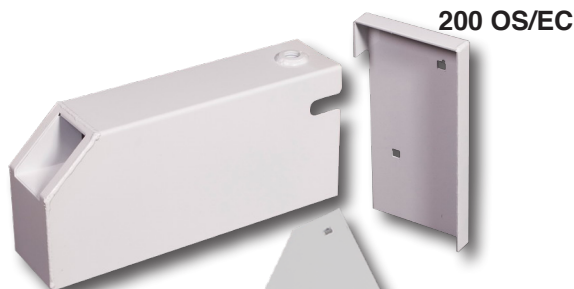
## Old Maytag



200 OS/CF  
(Closed Face)

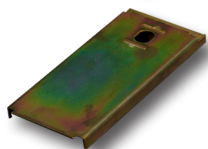


200 OS/OF  
(Open Face)



200 OS/CF-A  
(Closed Face -  
Full Assembly)

200 OS/SP



200 OS/LB

### Security Guard Features

- ❖ 11 GA Steel (1/8") Zinc plated (Avoids rust)
- ❖ Powder coated to customer specifications
- ❖ High security w/extra slide protection
- ❖ Closed face secures the entire coin box
- ❖ Open face is for easy access to coin box

### Kwik Sleeve (OS/CF or OS/OF)

- ❖ Regular Guard with lip in back which secures guard to meter case with minimum security

### Full Assembly Security Guard (-A)

- ❖ Guard without lip for side plate & end cap assembly
- ❖ Secures meter case with maximum security
- ❖ Side Plate - adds extra security to side of unit (200 OS/SP)
- ❖ End Cap - adds extra security to back of unit (200 OS/EC)

### Lock Bracket (LB)

- ❖ Replaces stock meter case door
- ❖ Allows Guard to mount securely
- ❖ 5/16-18 cage nut included
- ❖ 12 GA steel (7/64") Zinc plated

### When Ordering

- ❖ Specify (-C) for coin drop  
(Example: 200 OS/CF - C) =  
Old Maytag Kwik Sleeve Closed Face Coin Drop
- ❖ Specify (-A) for full assembly  
(Example: 200 OS/CF - A) =  
Old Maytag Kwik Sleeve Closed Face For Full  
Assembly
- ❖ Most Guards work for both coin drop & slide