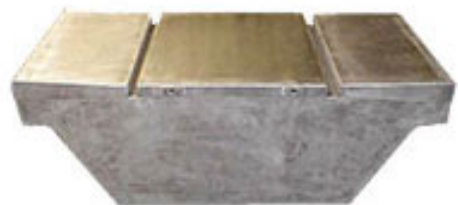




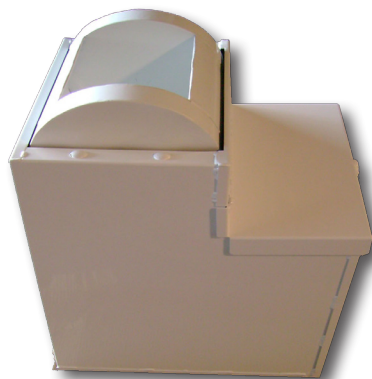
## Safes



**Truck Safe**



**Bed Safe**



**Box Safe**

### Truck Safe

- ❖ Solid aluminum construction
- ❖ 2 side money tumbler
- ❖ 1 large storage area
- ❖ 1 access door
- ❖ Money easily deposited
- ❖ No pry points or entry without keys
- ❖ Adapts to most vehicles
- ❖ Powder coated to customer specifications

### Bed Safe

- ❖ Solid aluminum construction
- ❖ One large money tumbler
- ❖ 2 access doors
- ❖ Money easily deposited
- ❖ No pry points or entry without keys
- ❖ Adapts to most vehicles
- ❖ Powder coated to customer specifications

### 18" Box Safe

- ❖ Solid aluminum construction
- ❖ 1 money tumbler
- ❖ 1 access door
- ❖ Money easily deposited
- ❖ No pry points or entry without keys
- ❖ Adapts to most vehicles
- ❖ Powder coated to customer specifications